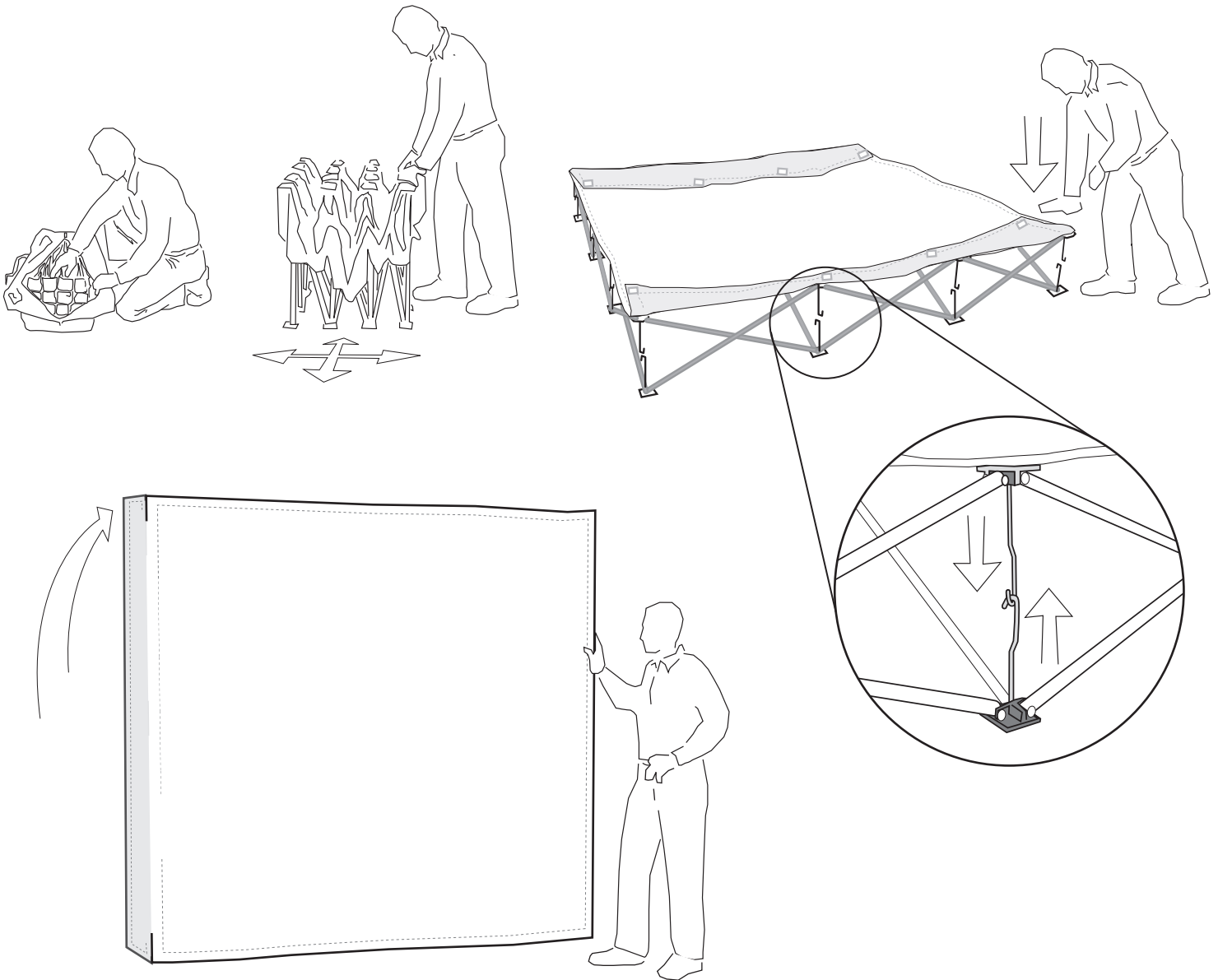


Set-up Instructions



Set-up Instructions

For table top or standing 8ft backwall (shown)

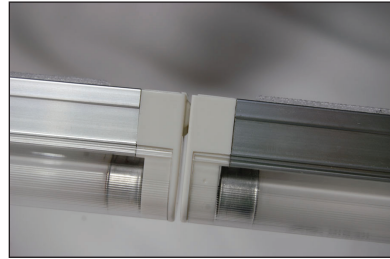
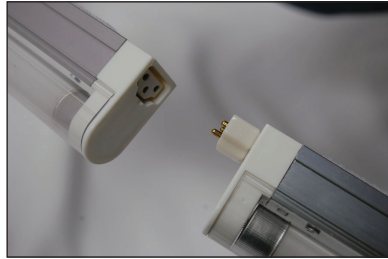
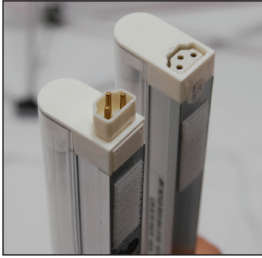
1. Spread collapsed display out in all four directions - fabric graphic facing up
2. Connect apposing J-hooks around perimeter of display
3. Stand display up and connect remaining center J-hooks from behind
4. Velcro attach side graphic flaps to back hubs of display
5. To break down repeat steps in reverse

Make Sure All J-hooks Are Disengaged Before Collapsing Display

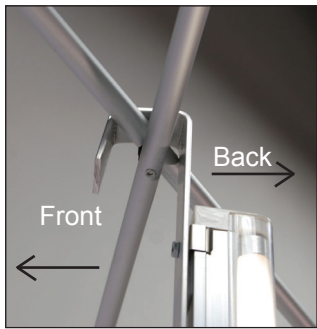
Set-Up Instructions 4x3 Flat

1. Set up the VBurst display and connect all the hooks.

2. Connect the Male end to the Female end of all three light bar sets. Male & Female adapters come with each light bar to use for connection.



3. Hang the hook end of all three light bar sets on the center of each top section. Make sure light bars face the fabric back cover for best backlit quality.

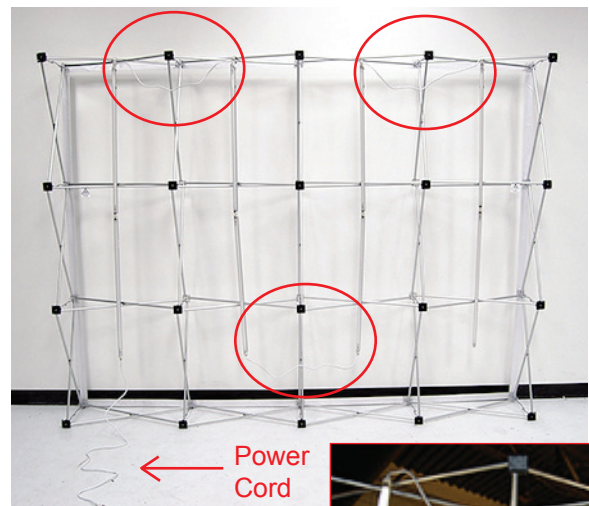


Hang light bars so the light faces the back cover.

5. Attach the fabric back cover by starting at the top of one end cap bracket and continue across the top to the other end cap bracket. Do the same for the bottom of the display. Complete the attachment of the fabric back cover by wrapping the rest of the fabric and attaching the velcro to all the endcap brackets on both ends.



4. Connect three 36" link cables (red circle areas show connections and close up image) to top and bottom as needed to daisy chain the light bar sets together. Connect the power cord to the bottom of one of the far left or right lightbar sets. Extend power cord out from back of frame and plug in to wall outlet.



Link cable connection close up.



6. Attach the front graphic endcap portion to the exposed velcro edge of the back cover on the end cap brackets to complete the front graphic attachment to the VBurst display.

