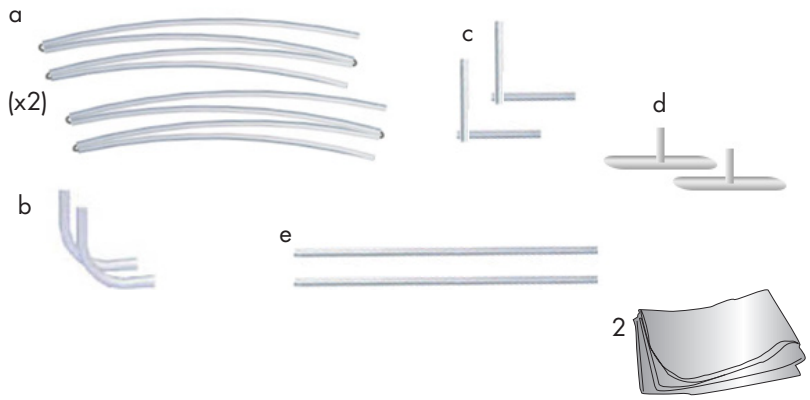


Product Parts

1 - Hardware

- a - Side Shock-Corded Poles (x2)
- b - Top Curve Poles (x2)
- c - Bottom Corner (x2)
- d - Feet (x2)
- e - Top/Bottom Horizontal Poles

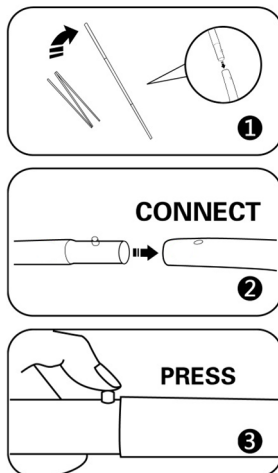
2 - Graphic



Hardware Assembly

Step 1

Open all parts to the hardware and assemble the parts by matching up the symbols to the corresponding symbol illustrated in the image to the right.



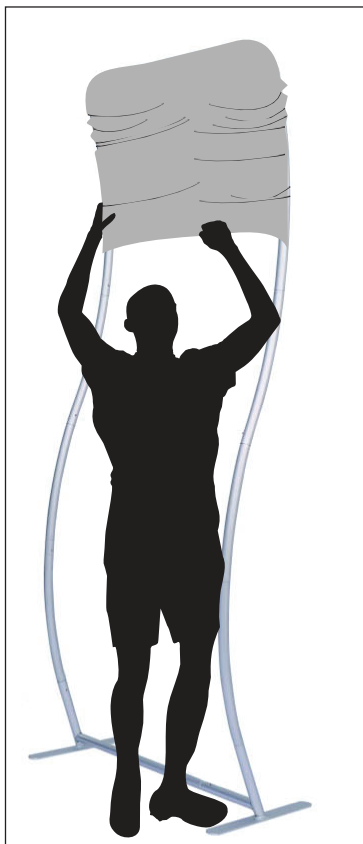
NOTE:

Symbols represented to the right are for reference only and do not necessarily represent the symbols on your hardware.

Graphic Setup

Step 1

Set the assembled hardware on a clean surface. Locate the bottom of the graphic (zippered end) and slide it over the top of the hardware and continue to slide down over hardware.

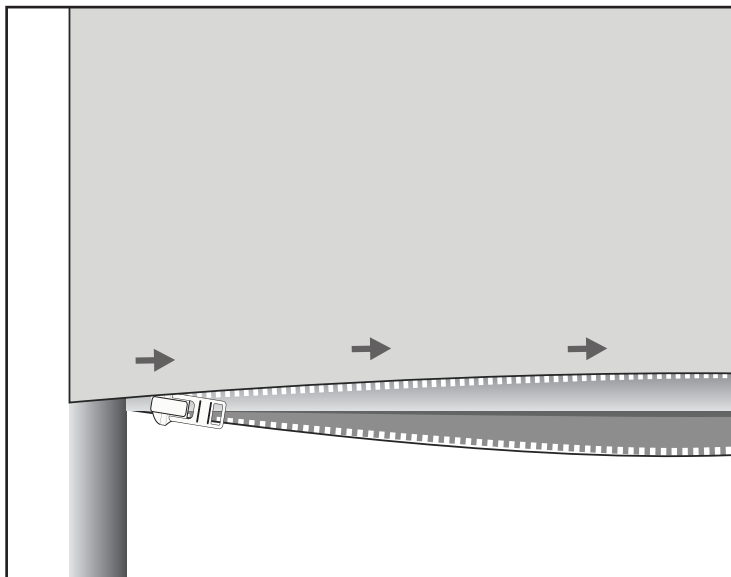


NOTE:

The graphic is designed to fit the hardware precisely, as a result the graphic may appear to be too tight during the installation process (this is normal).

Step 2

Zip the graphic closed on the bottom.



Storage

Store in a cool dry location.

Care

Machine Wash Cold, gentle cycle. Air Dry Only

Warranty Information: All products are designed to provide the user with a cost-effective and durable product. Standard warranty is a 'one year parts and labor' warranty which warrants product against defects in material and workmanship. It does not cover damage due to accidents, abuse, or normal wear and tear. Products found to be defective will be replaced or repaired at factory's discretion.