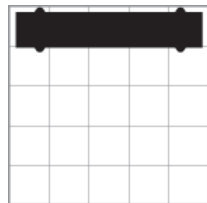
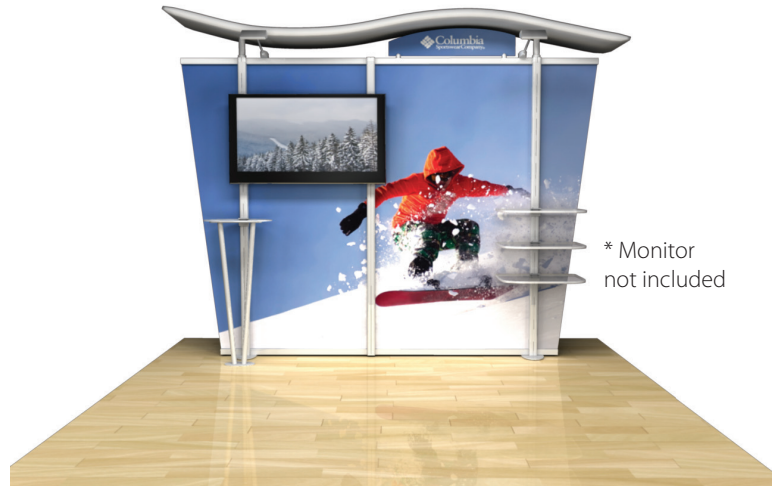


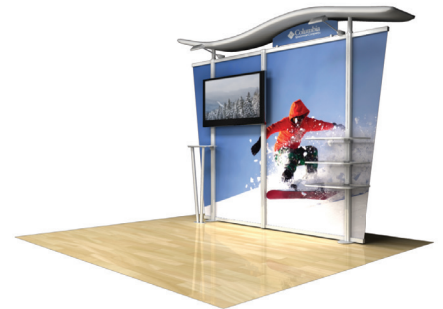
10ft Timberline Hybrid Modular Monitor Tapered Display • TL1002F-T-TV

Single-Sided Graphic

Product Specifications	
Display Dimensions	117.5"w x 96"h x 19"d
Weight	132 lbs.
Box Dimensions	28"w x 48"h x 13"d
Case Interior Dimensions	24"w x 45.5"h x 9.5"d
Acrylic Shelf Dimensions	9.5"w x 18.75"l
Acrylic Table Dimensions	24"w x 36" h x 16"d
Set Up Time	40 minutes, 2 people



Aerial grid of 10' x 10' space



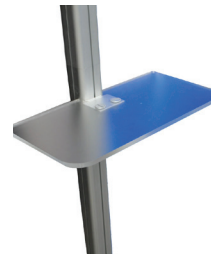
Side View

About This Product

Our Timberline Hybrid Series gives you the ultimate in versatility. Customizable modular displays can be arranged in numerous configurations. Displays are easy to set up and adjust to fit any size area. Showcase your products for your tradeshows or special events with a variety of options such as reception desks and shelves.

Package Includes

- (1) Modular display frame
- (1) Center fabric graphic
- (2) Wing fabric graphics
- (1) Large monitor mount
- (1) Wave canopy with fabric
- (3) Acrylic shelves
- (1) Frosted acrylic header
- (2) LED lights
- (1) Frosted acrylic reception desk
- (1) Molded plastic case
- (1) Instructions



Optional Items

- Flooring
- Back printed header

