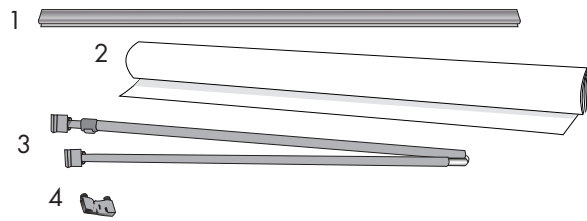


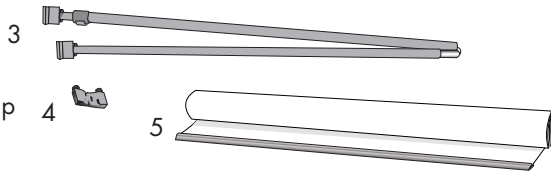
## Product Parts if Installing Banners

- 1 - Snap Banner Rail (x6)
- 2 - Graphic Banner (x3)
- 3 - Vertical Telescoping Pole (x3)
- 4 - Corner Hinges (x6)



## Product Parts for Display (skip to STEP 4 )

- 3 - Vertical Telescoping Pole (x3)
- 4 - Corner Hinges (x6)
- 5 - Graphic Banner with Snap Rails (x3)



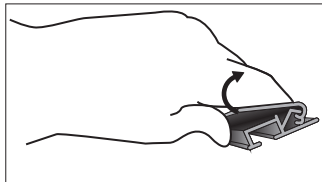
## Banner Install

### Step 1

Begin by removing all parts from the case and place them on a clean, flat surface.

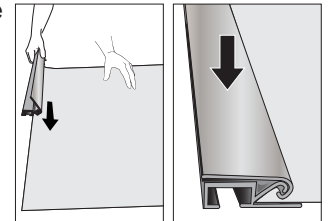
You will be taking Parts 1 and 2 to create Part 5 of your Display.

Open the clamp of the Snap Banner Rail.



### Step 2

Fully insert the Graphic Banner (2) into the groove of the Snap Banner Rail (1). When in place push down on Snap Banner Rail (1) to close into place.



### Step 3

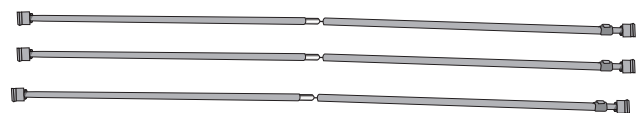
Continue the process in Step 2 to the top and bottom of all Graphic Banners (2). You should have 3 Graphic Banners (5) that look like this:



## Display Set up

### Step 4

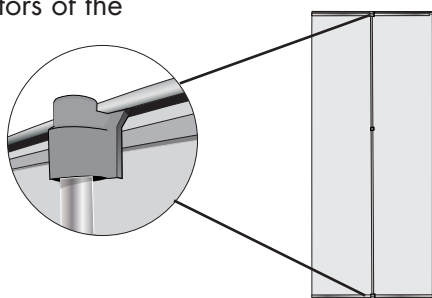
Assemble all Vertical Telescoping Poles(3)



## Display Set-Up Continued...

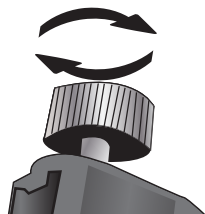
### Step 5

Insert the end connectors of the Vertical Telescoping Poles (3) into the rear groove on the Snap Banner Rails (1) where the "insert" sticker is located.



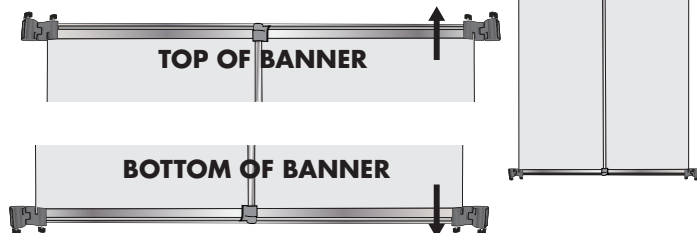
### Step 7

Take all Corner Hinges (4) and loosen all top screw knobs to accept the Snap Banner Rails (Do NOT take screws completely out of Hinge)



### Step 9

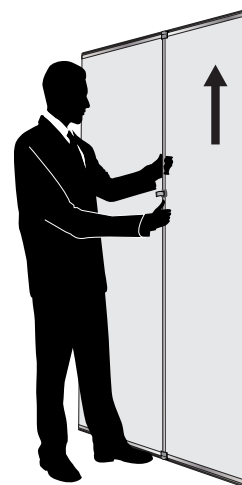
Repeat Step 8 on all 4 corners of ONE Graphic Banner with Snap Rails (5). **NOTE:** screw knobs on all Corner Hinges must face away from the Graphic Banner (they will face UP on the top Rail and DOWN on the bottom)



### Step 6

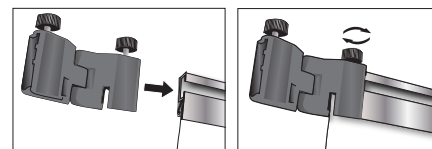
Adjust the Vertical Telescoping Poles (3) until the Graphic Banner with Snap Rails (5) is taut.

Repeat steps 5 and 6 to the other Graphic Banner with Snap Rails (5). You will have three total when complete.



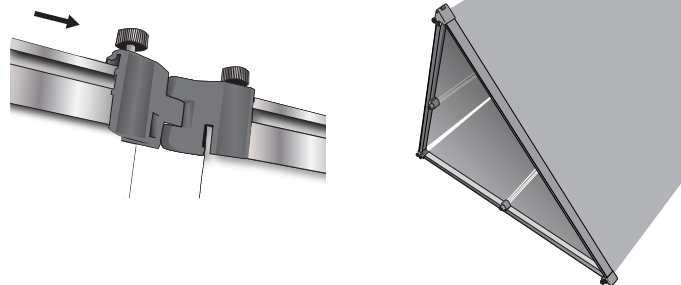
### Step 8

Start with ONE Graphic Banner with Snap Rails (5) that has the Vertical Telescoping Pole (3) installed and attach Corner Hinges (4). Slide Corner Hinge (4) onto the grooves of the Snap Banner Rail and tighten screw knob to secure.



### Step 10

You can now attach the other Graphic Banner with Snap Rails (5) to the one that was created in Steps 8 and 9.



## Storage

Place all product parts into Soft case (with a sturdy cardboard insert to protect product) and store in a cool dry location.



## Care

To clean, wipe with damp cloth.

*Warranty Information: All products are designed to provide the user with a cost-effective and durable product. Standard warranty is a 'one year parts and labor' warranty which warrants product against defects in material and workmanship. It does not cover damage due to accidents, abuse, or normal wear and tear. Products found to be defective will be replaced or repaired at factory's discretion.*