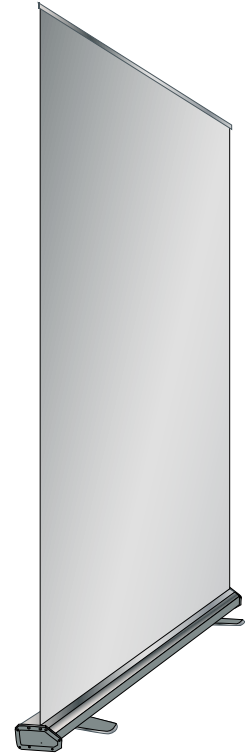
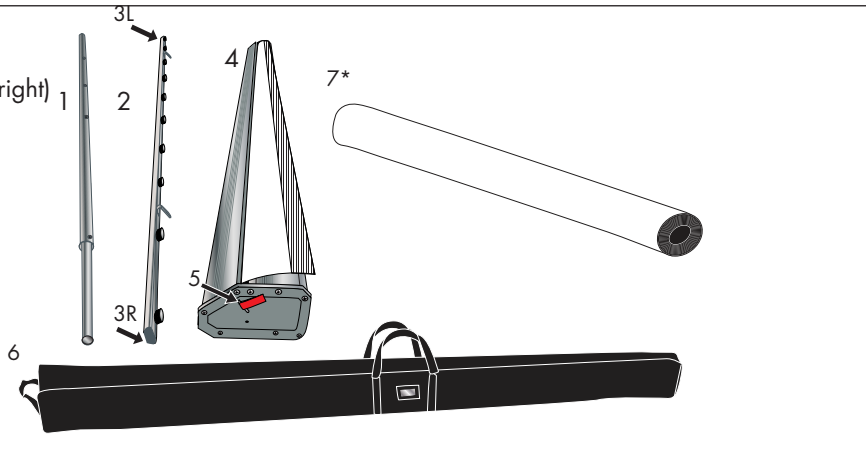


Product Parts

- 1 - Telescoping Pole (x2)
- 2 - Top Banner Rail
- 3 - End Caps (x2=1left/1right)
- 4 - Base with Leader
- 5 - Pin
- 6 - Case
- 7* - Graphic Banner (attaches to Leader)



*NOTES:

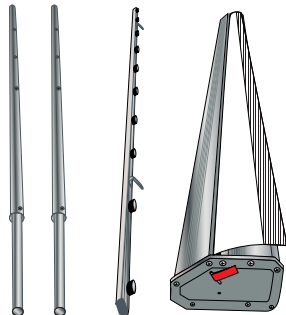
- Graphic Banner is not included in item #261087
- Graphic Banner comes attached to leader in item #261086

IF YOU ORDERED KIT 261086 SKIP TO STEP 11

Banner Install

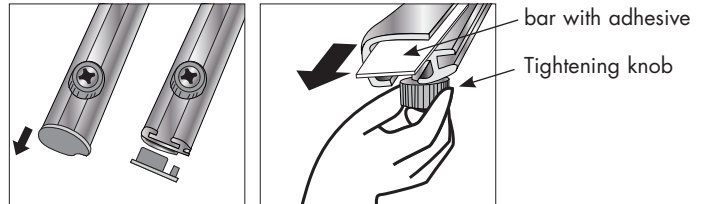
Step 1

Remove all parts from Case (6). Place on a clean flat surface.



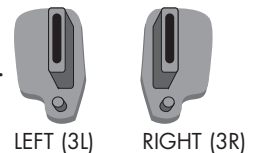
Step 2

Remove both End Caps (3) from Top Banner Rail (2). Loosen all 11 tightening knobs on Top Banner Rail (2) to release bar with adhesive strip located inside.



NOTE:

Save End Caps in a secure location.



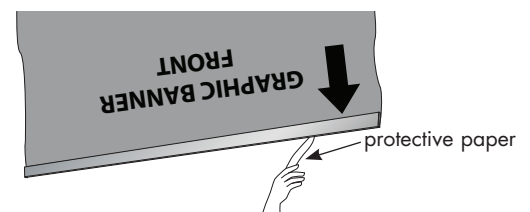
Step 3

Align top adhesive bar to the top of the Graphic Banner (7) (printed side up). **DO NOT REMOVE ADHESIVE UNTIL YOU HAVE THE BAR IN POSITION.**



Step 4

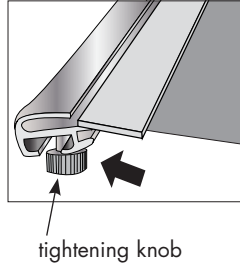
With bar in position, remove the strip of protective paper on the underside to expose the adhesive. Firmly and evenly press the bar onto the Graphic Banner (7) as you pull away the strip of protective paper.



Banner Install Continued

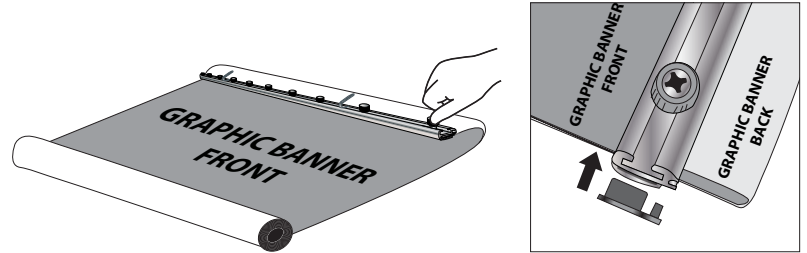
Step 5

With adhesive bar now secured to top of Graphic Banner (7) and all tightening knobs loosened, insert the bar into the Top Banner Rail (2). **NOTE:** make sure to have the tightening knobs facing the BACK side of the Graphic Banner (7).



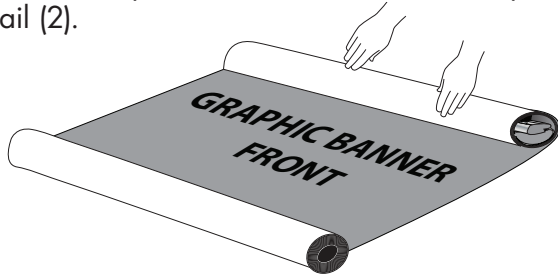
Step 6

With Graphic Banner (7) inserted into Top Banner Rail (2), tighten all 11 knobs to secure into place. Replace the End Caps (3) onto each end of the Top Banner Rail (2)



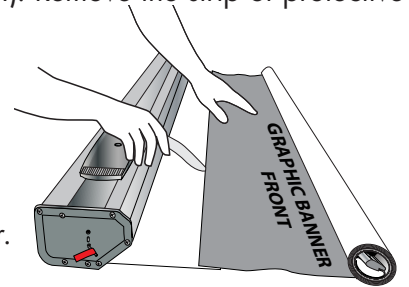
Step 7

Loosely roll the Graphic Banner (7) around the Top Banner Rail (2).



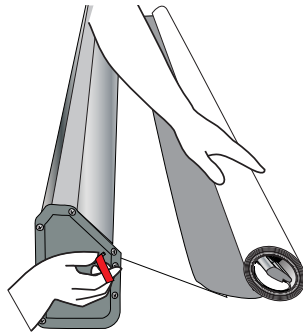
Step 8

Align the bottom edge of the Graphic Banner (7) to the tape leader on the Base (4). Remove the strip of protective paper to expose the adhesive. Firmly and evenly press the Graphic Banner (7) onto the adhesive, moving up the bottom edge as you pull away the protective paper.



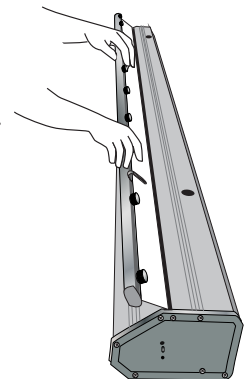
Step 9

Pull the Graphic Banner (7) away from the Base (4) to release the pin. Hold onto the Graphic banner (7) as you remove the pin from the side of the Base (4). Tension has now been added to the Graphic Banner (7). Do NOT let go of the Graphic Banner (7).



Step 10

While holding onto the Graphic Banner (7), slowly allow it to retract into the base. You are now ready to use the product.

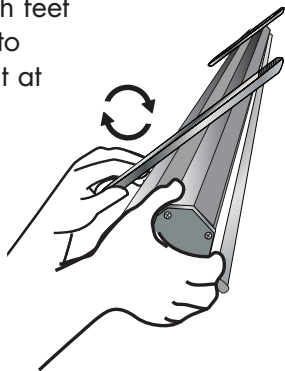


NOTE: Keep pin for future use.

Display Set-Up

Step 11

Turn unit over and rotate both feet into position (perpendicular to the base). Place retractor unit at desired location.



Step 12

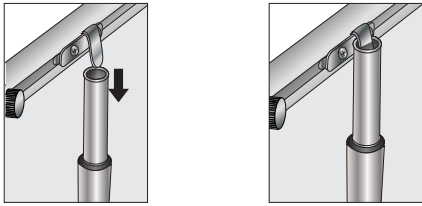
The Mammoth retractor requires two people to setup. In Tandem with another person insert the Telescoping Poles (1) into the Base (4).



Display Setup Continued

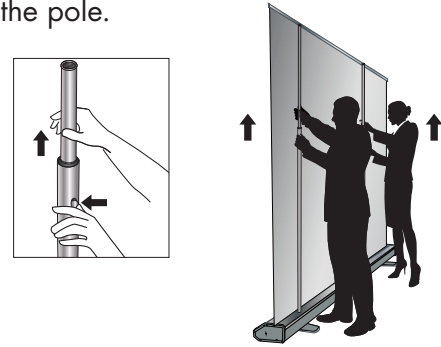
Step 13

In tandem with another person, pull the Top Banner Rail (2) up from the Base (4) and secure it into the top of the Telescoping Pole (1).



Step 14

While holding the bottom of the Telescoping pole (1) secure, push the release button in to extend the top portion of the pole.



Step 15

In tandem with another person, hold the bottom portion of the Telescoping pole (1) while extending the top portion of the Telescoping Pole (1) to the full height.



The Mammoth Retractor is now ready for Display

Storage and Care

In tandem with another person reverse steps 15 thru 11 and place unit into the case (6).

Store in a cool dry location.

To clean, wipe with damp cloth.